

# Steps to connect to DESL computers remotely:

1. Open ECF page from this link and login using your credential.

<https://ssl.ecf.utoronto.ca/ecf/services/rd>

[Log In](#) [Log Out](#) [Status](#) [Lab Schedules](#) [Change Password](#)

## Windows Remote Desktop

All ECF labs are closed as of Monday, March 16 due to concerns about COVID-19. Only remote access will be possible. Please see <https://uoft.me/ecf-covid19> for updates.

You no longer need to visit this site every time you want to connect to an ECF Windows Remote Workstation. The hostname **Your-ECF-Username.rd.ecf.utoronto.ca** (where **Your-ECF-Username** is your ECF username) will always connect you to an available host, provided there is one. To download a customized RDP file that will always connect you to an available workstation, please [log into this website](#) using your ECF username and password and then click **Windows Remote Desktop** at the top of the page. Please feel free to contact us at [sec@ecf.utoronto.ca](mailto:sec@ecf.utoronto.ca) if you have any questions or problems with this service.

Resolution: [Widescreen: [720p (1280x720)] [1280x800] [1440x900] [1680x1050] [1080p (1920x1080)] [1920x1200] [2560x1600] [4K UHD-1 (3840x2160)] Standard: [640x480] [800x600] [1024x768] [1280x960] [1680x1200] [2048x1536] Other: [Default] [Full Screen] [2048x1536]]  
Colours: [Default] [256 Colours] [15-bit] [16-bit] [True Color (32-bit)]

**Workstations:**  
To connect to an available ECF Windows Remote Workstation, connect your Remote Desktop client to the hostname **Your-ECF-Username.rd.ecf.utoronto.ca**, where **Your-ECF-Username** is your ECF username.

[Any Available Workstation \(224 of 232 available\)](#)

2. Once you are successfully login, select 'Windows Remote Desktop' tab.

[Account Status](#) [Printing History](#) [Lab Status](#) [Lab Schedules](#) [Change Password](#) [Windows Remote Desktop](#) [Remote Linux](#) [Log Out](#)

## Account Status

You do not owe ECF any money for excessive printer use in previous terms. [View past charges and payments.](#)

You have used 0 pages (0 pages from Linux, 0 pages from Windows) of your 0-page quota this term. ([How is my print quota calculated?](#))

3. The list of available computers for remote access will be appeared based on room name/number. Select 'DESL (ECE)'.

[Account Status](#) [Printing History](#) [Lab Status](#) [Lab Schedules](#) [Change Password](#) [Windows Remote Desktop](#) [Remote Linux](#) [Log Out](#) Logged in as: eceglues

## Windows Remote Desktop

All ECF labs are closed as of Monday, March 16 due to concerns about COVID-19. Only remote access will be possible. Please see <https://uoft.me/ecf-covid19> for updates.

You no longer need to visit this site every time you want to connect to an ECF Windows Remote Workstation. The hostname **Your-ECF-Username.rd.ecf.utoronto.ca** (where **Your-ECF-Username** is your ECF username) will always connect you to an available host, provided there is one. To download a customized RDP file that will always connect you to an available workstation, configure the Resolution and Colours options at the top of the page according to your preferences, then click on one of the icons below (e.g. "Any Available Workstation") and save the resulting RDP file. See our [help page](#) for more information. Please feel free to contact us at [sec@ecf.utoronto.ca](mailto:sec@ecf.utoronto.ca) if you have any questions or problems with this service.

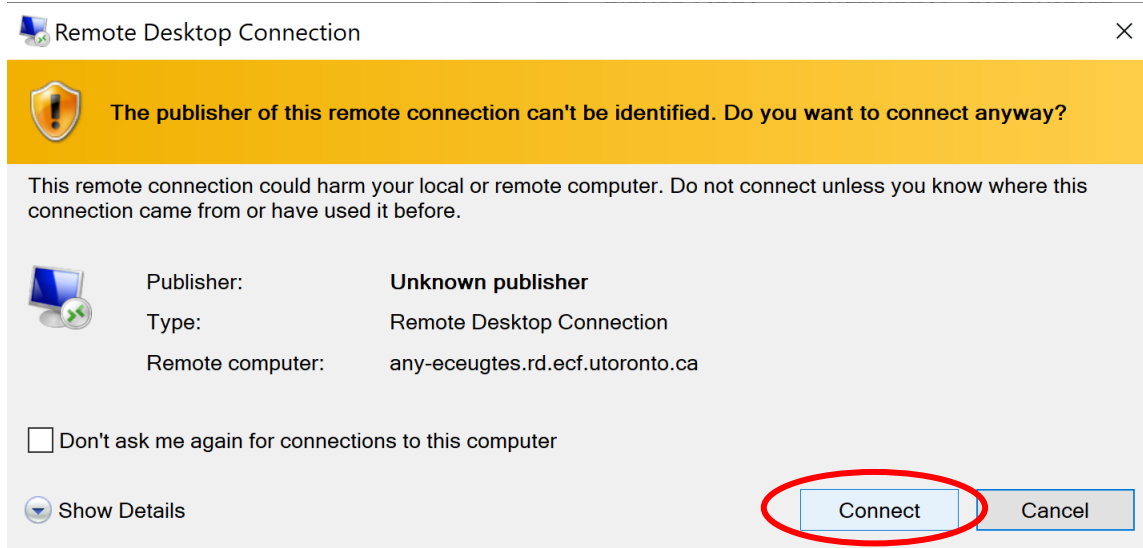
Resolution: [Widescreen: [720p (1280x720)] [1280x800] [1440x900] [1680x1050] [1080p (1920x1080)] [1920x1200] [2560x1600] [4K UHD-1 (3840x2160)] Standard: [640x480] [800x600] [1024x768] [1280x960] [1680x1200] [2048x1536] Other: [Default] [Full Screen] [2048x1536]]  
Colours: [Default] [256 Colours] [15-bit] [16-bit] [True Color (32-bit)]

**Workstations:**  
To connect to an available ECF Windows Remote Workstation, connect your Remote Desktop client to the hostname **sec@ecf.utoronto.ca**.

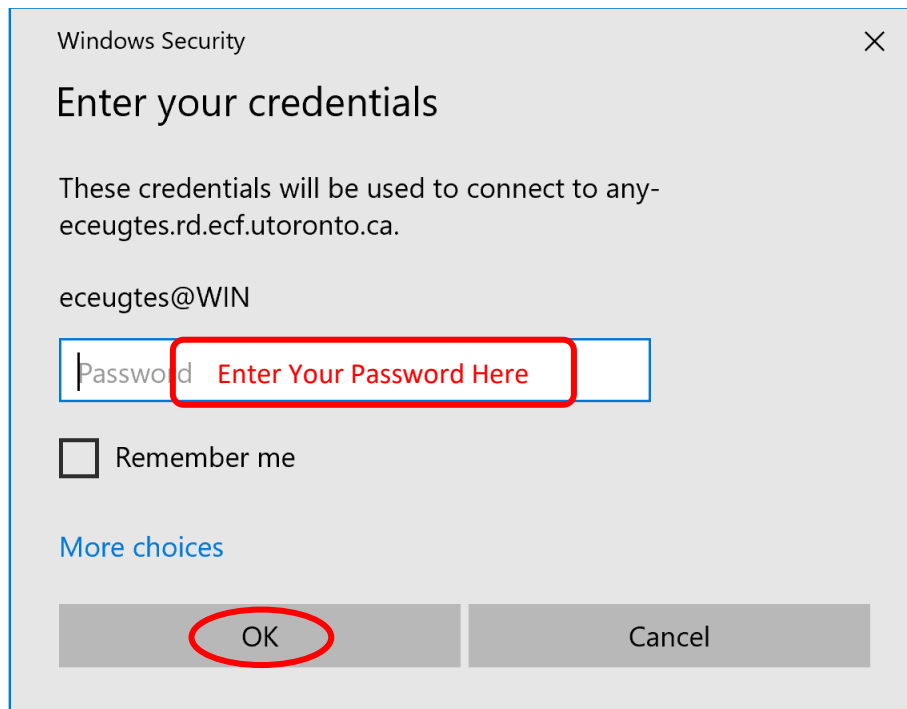
[Any Available Workstation \(220 of 232 available\)](#) [BA3128 \(ECE\) \(33 of 34 available\)](#) [DESL \(ECE\) \(17 of 129 available\)](#) [WB216 \(CHE\) \(12 of 18 available\)](#) [MB400 \(CIV/MIN\) \(55 of 98 available\)](#) [BA2128 \(Eng Sci\) \(28 of 28 available\)](#) [MB123 \(ME\) \(55 of 66 available\)](#) [MB07 \(ME\) \(25 of 27 available\)](#) [RS300 \(ME\) \(31 of 54 available\)](#) [WB158 \(MSE\) \(22 of 24 available\)](#)

Engineering Computing Facility  
Please send comments or inquiries to [sec@ecf.utoronto.ca](mailto:sec@ecf.utoronto.ca)

4. Once you click, a remote desktop file will be downloaded to your computer. Click on the file to open it. The message below will be prompted. Select connect.



5. You will be asked to enter your ECF account password. Please enter your password and click OK.



6. A new window will be open on your screen showing you are about to connect to one of the DESL computers.

## To lunch specific software on DESL Image:

**Logisim:**

**C:\DESL\Logisim-win-2.7.1.exe**

**FPGA Simulator:**

1. Find 'FPGA Simulator' folder under your course name:  
S:\courses\ECE241F  
Or  
S:\courses\ECE253F
2. Copy the entire folder and paste to your W:\ drive.
3. Find 'Run.bat' in 'desim\_win32' and double click to open the application.